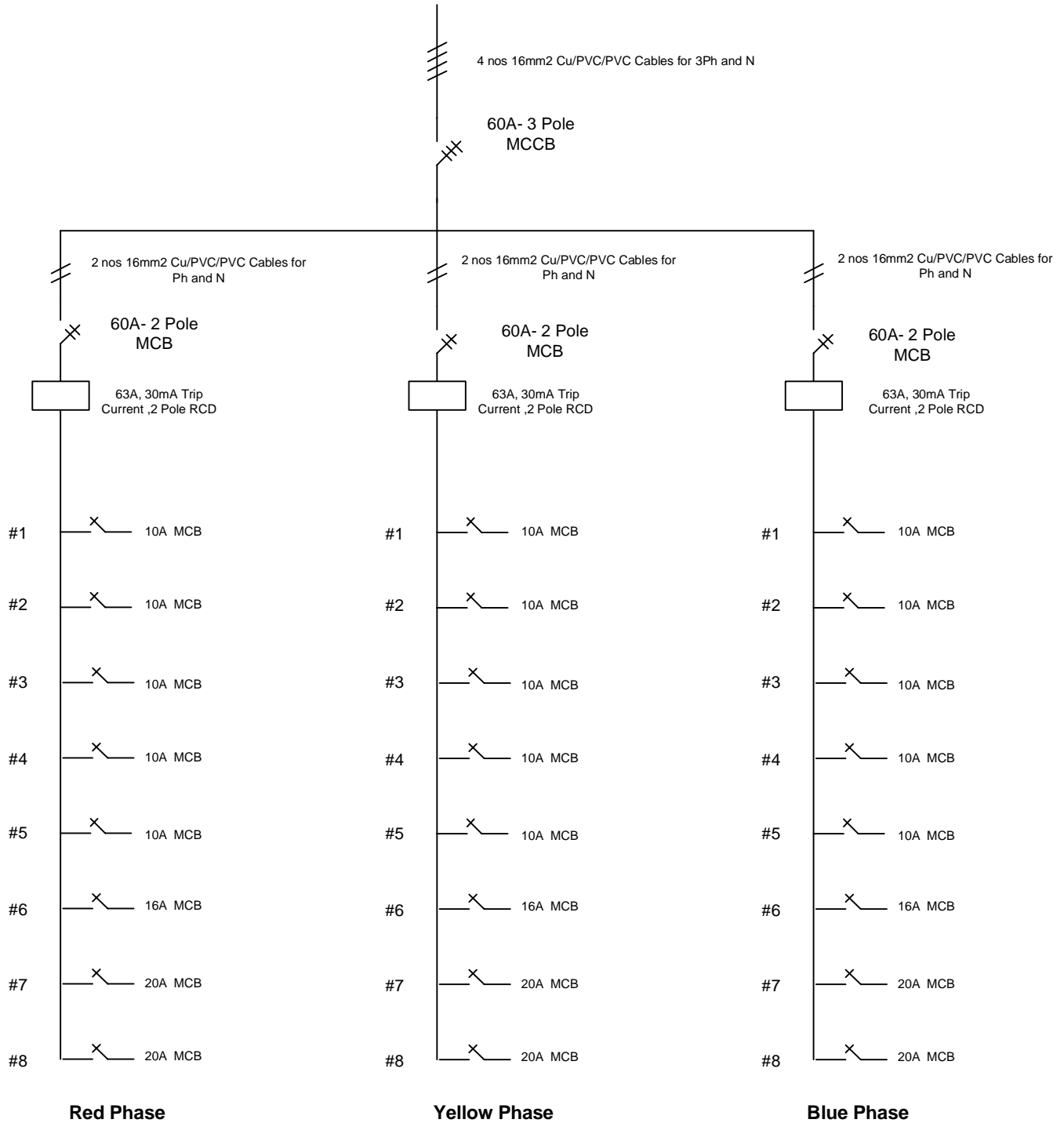


Incoming 3 Phase Supply from Utility (380-400V AC between Phases)



**3 Raw (12 Way) + MCCB Distribution Board
(Consumer Unit) for Power Distribution**

**Wiring Diagram of a 380-400V- Three Phase, 60A
Distribution Board [Consumer Unit] with
Single Phase Power Distribution
for Lighting ,AC Unit and 13A Radial Circuits for
each Phase**

